

MULTIPLEX

Corporate Profile

Q12026



An aerial night view of a city skyline. In the foreground, a large, modern building is illuminated with a vibrant red, grid-like pattern of lights. To the left, a tall, cylindrical structure is also lit with red lights. In the background, several skyscrapers are visible, including one with the 'bankwest' logo and another with 'Woodside' and 'UARIE' signs. The sky is a deep orange and red, suggesting a sunset or sunrise. The overall scene is a mix of modern architecture and urban lighting.

Multiplex is a premier construction company known for shaping skylines and delivering iconic projects around the world. Established in 1962, Multiplex has delivered over 1,150 projects with a combined value of US\$130+ billion.

From the CEO



It is undoubtedly a challenging time for our industry. Labour shortages, the cost of materials and broader economic uncertainty continue to place pressure on contractors and our supply chain.

However, Multiplex has been riding the waves of change in our industry for more than 60 years and with any challenge comes opportunity.

Across the board we are seeing a continued flight to quality, with good clients viewing us as a safe pair of hands to deliver their projects on time, on budget and on carbon.

Our global workbook is well diversified with opportunities in all regions and particularly strong momentum in complex sectors such as data centres and health, where our technical capability and collaborative approach sets us apart.

Emerging technologies are creating endless opportunities to solve problems and make what we do better, more efficient and more impactful.

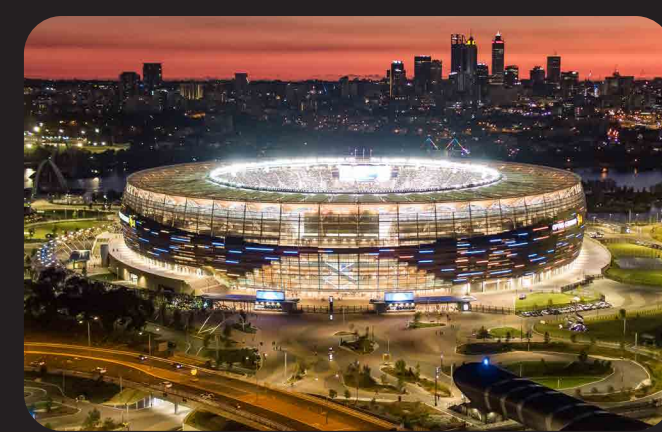
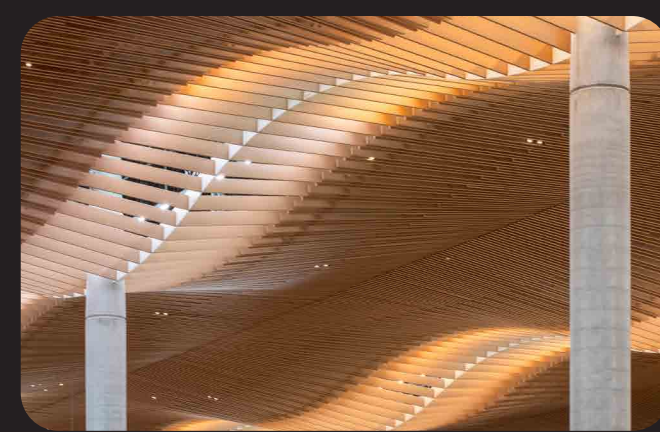
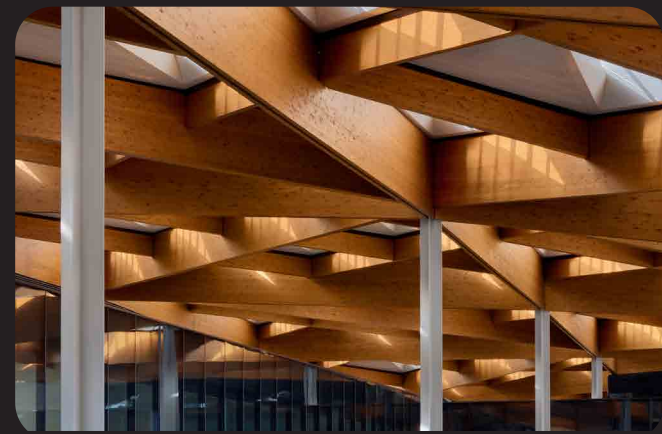
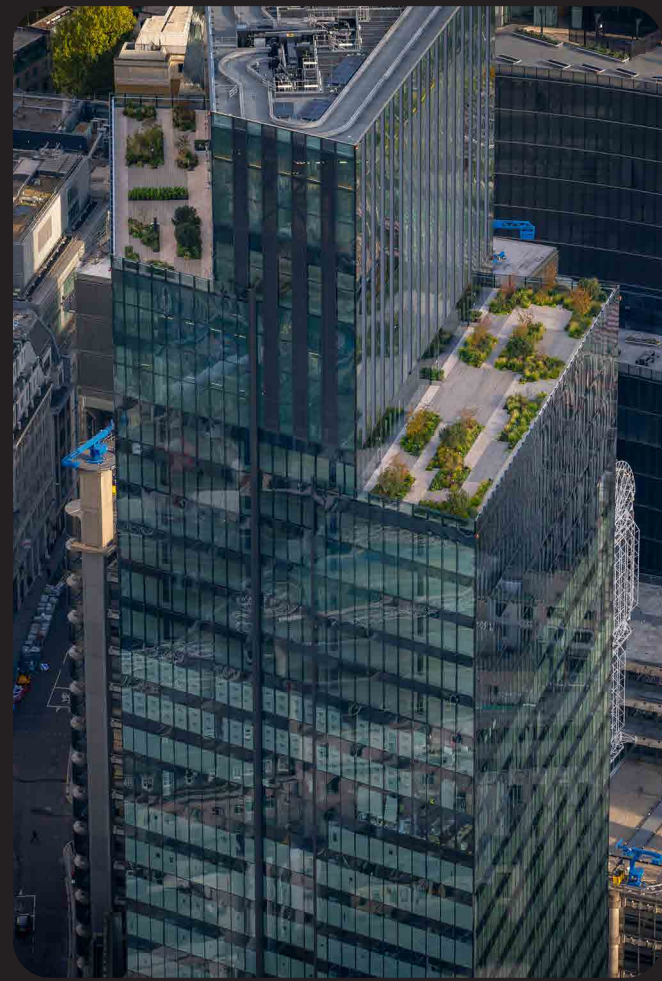
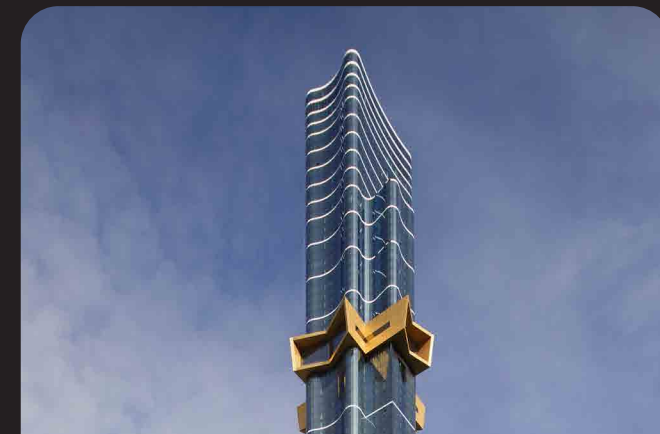
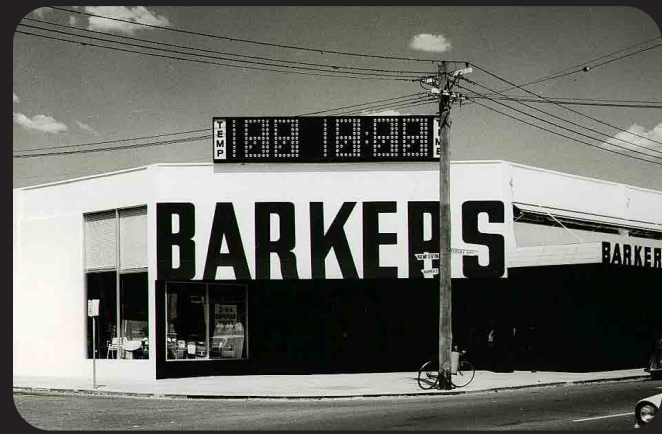
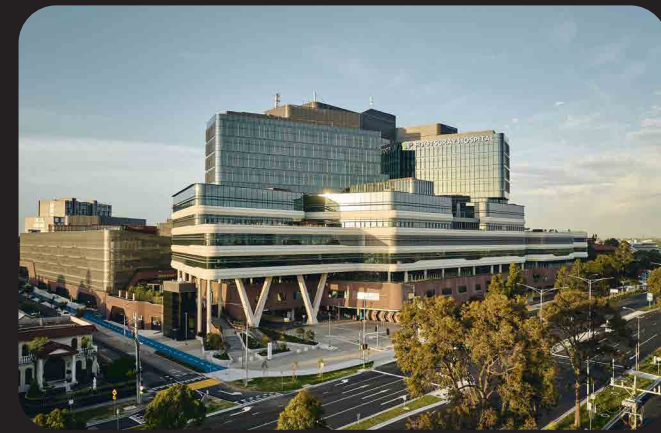
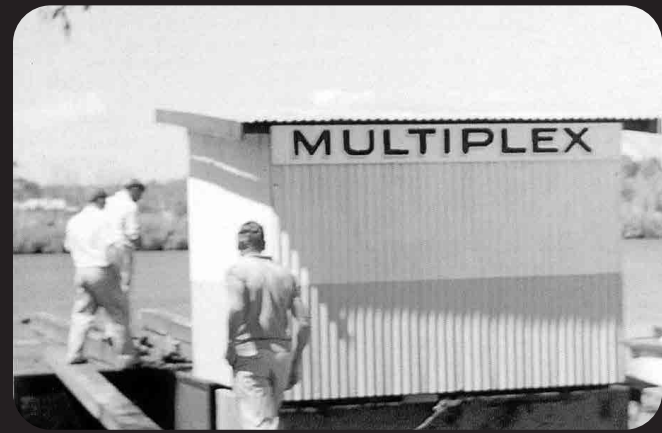
It's an exciting time. We are embracing the opportunity to work with our clients, supply chain, communities and industry partners to deliver exceptional projects and fulfil our purpose, to construct a better future.

John Flecker

CEO, Global



One Nine Elms, United Kingdom



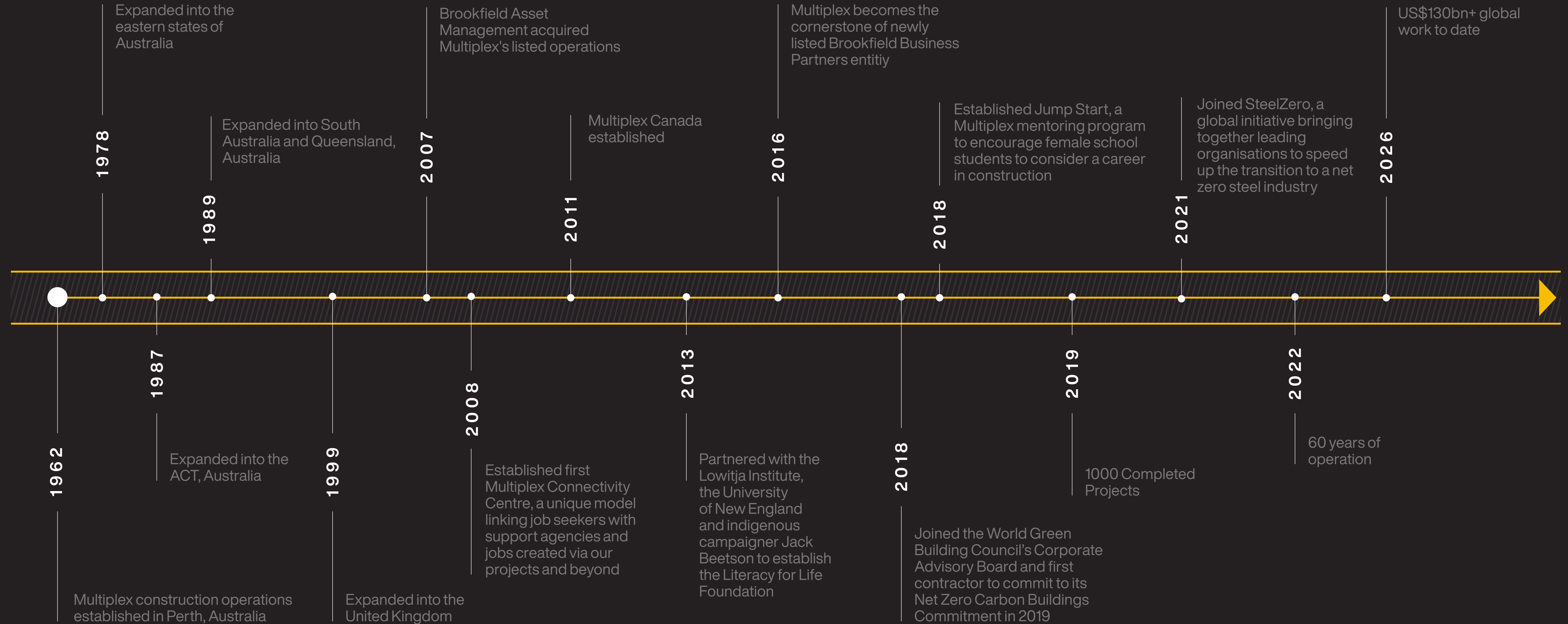
About Us



Our History

Building a culture of outperformance since 1962

Operating in 11 cities across three continents, our workbook includes some of the most iconic construction projects in the world. Our growth has been controlled and focused, targeting clients, cities and projects that complement our construction expertise and vision for outperformance.



Brand Platform

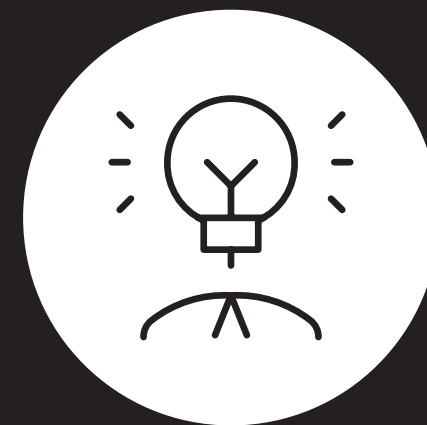
We are known for delivering the world's best projects. And we recognise that what we're good at can make the world better. So our purpose is simple - to construct a better future. A better future where opportunities are harnessed, and our people, projects, communities and industry reach their full potential. We are uniquely positioned to fulfil our purpose by drawing on our culture - a powerful combination of inherent values, and a belief that we can outperform in everything we do.

Our Purpose



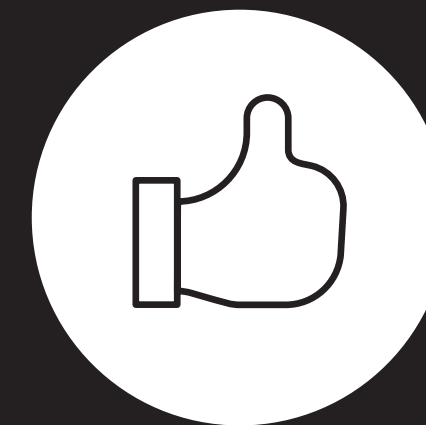
To construct a better future

Our Mindset



To outperform in everything we do

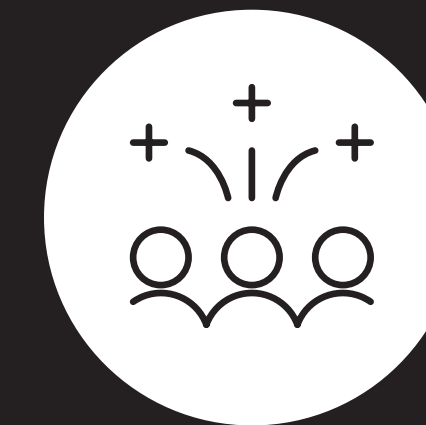
Our Values



We keep it real



We care about people



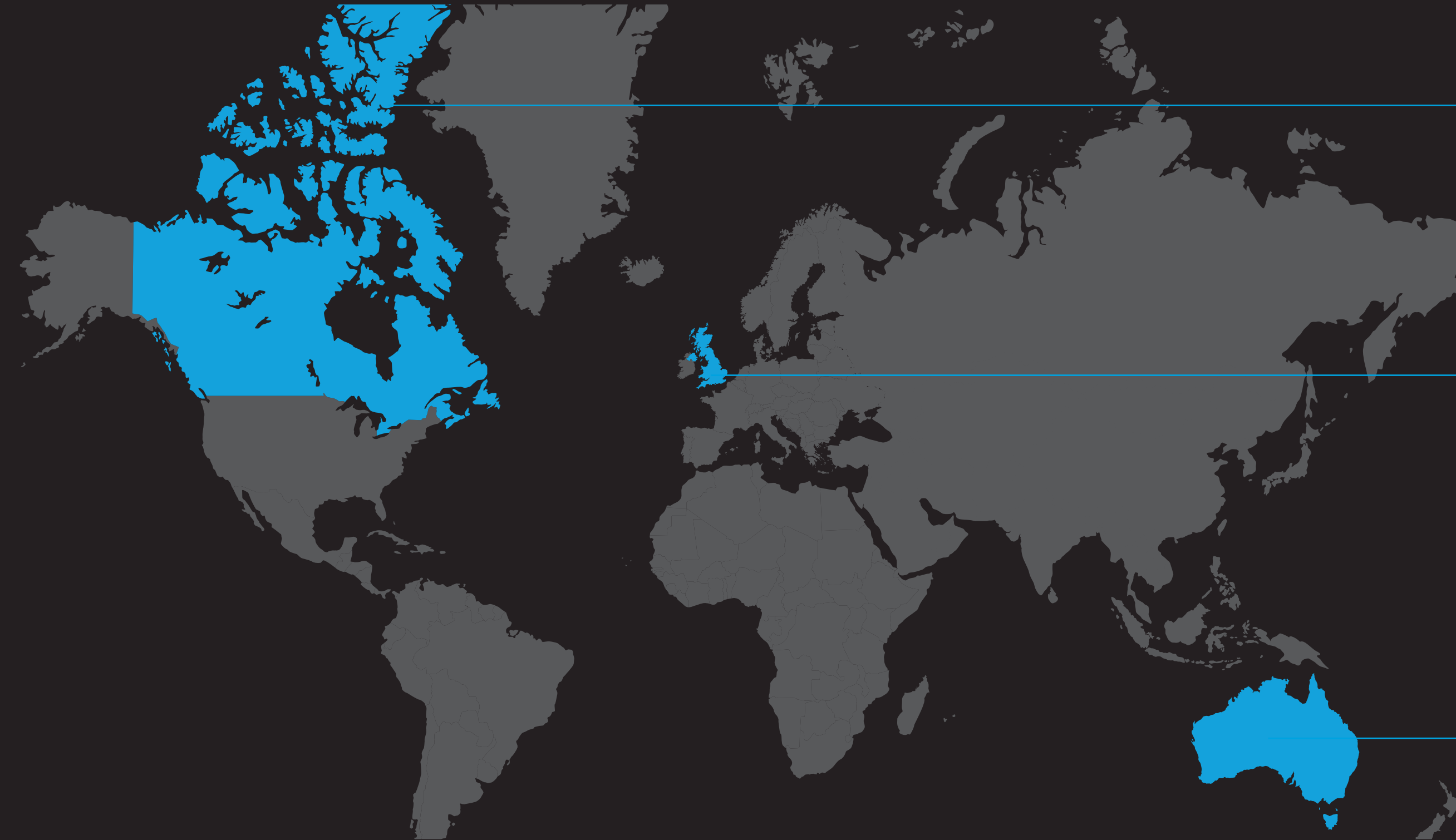
We are collaborative



We have grit

Global Construction Platform

International experience, one team



Canada

2011 Established in Canada

140 People

US\$3.1bn Work to date

52 Projects to date

United Kingdom

1999 Established in the UK

850+ People

US\$18.6bn Work to date

100 Projects to date

Australia

1962 Established in Australia

1,500 People

US\$88.7bn Work to date

959 Projects to date

With more than 2,500 people globally, we have a mobile workforce that collaborates to share knowledge and apply world's best practice across our projects.

*Work to date values reflect active regions only.

Financial Strength

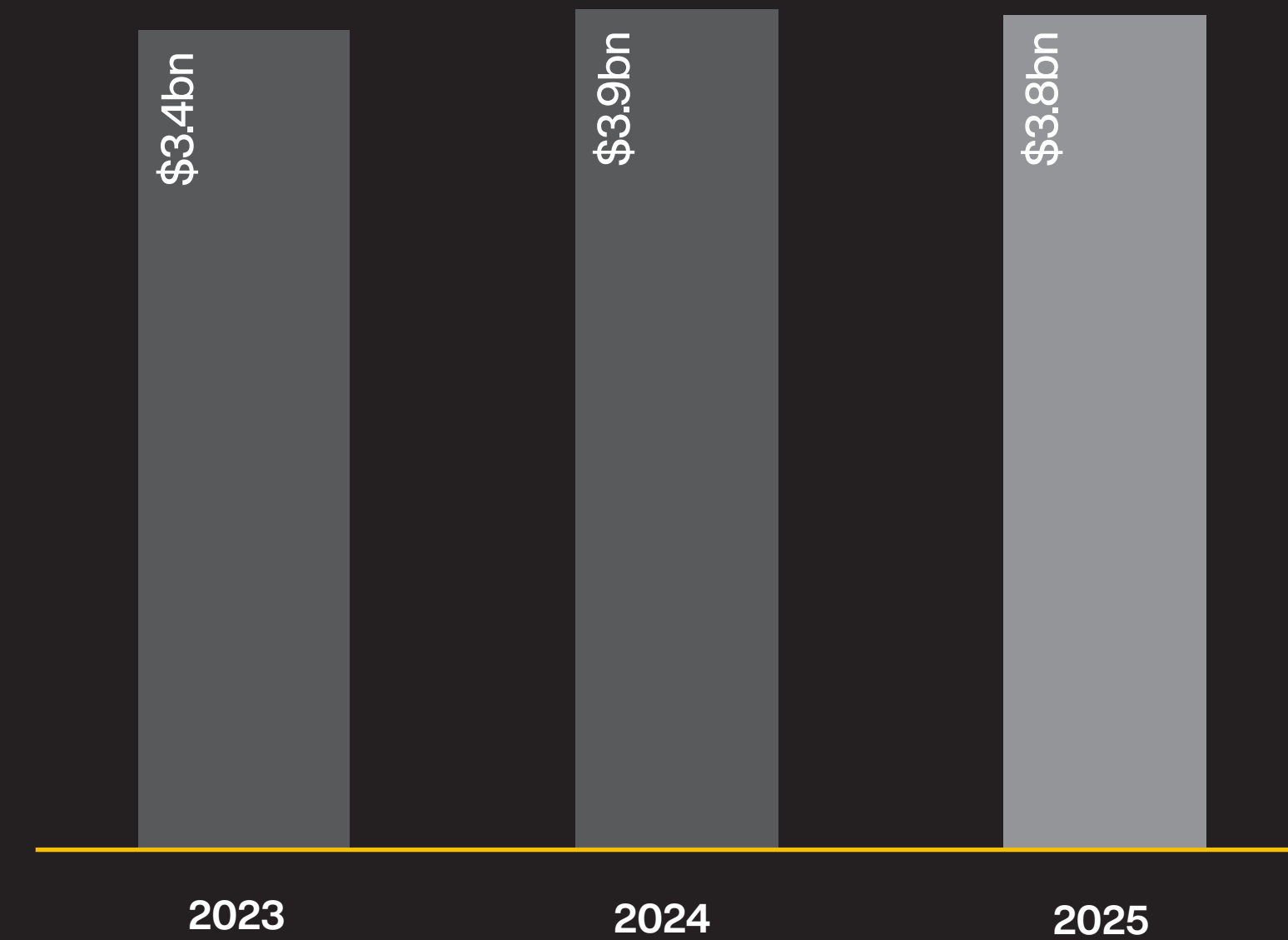
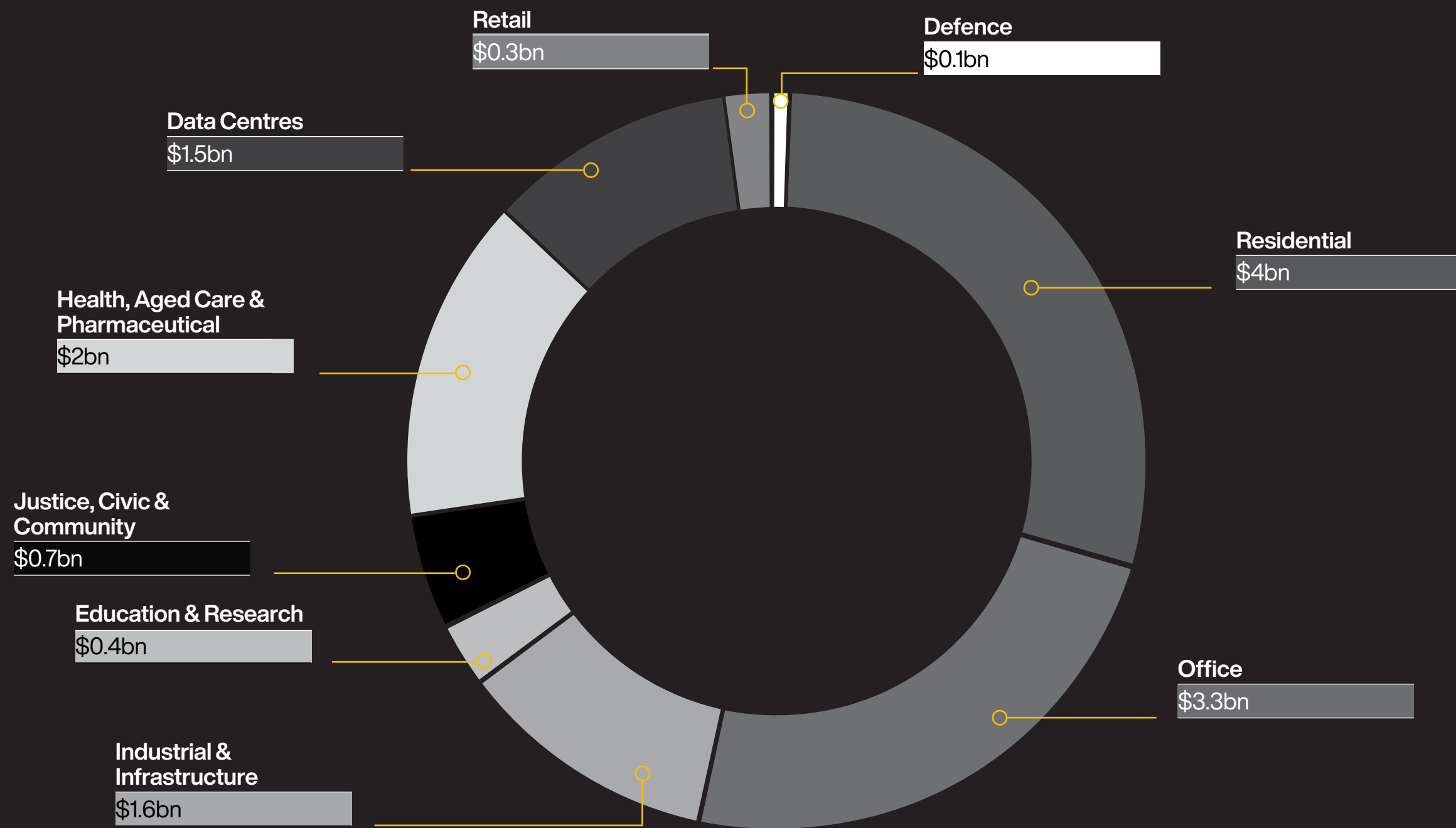
Sustainable growth and ongoing stability

Our parent company Brookfield is a leading global investment firm with over \$1 trillion of assets under management. It invests on behalf of institutions and individuals around the world with the goal of helping them to create long-term, sustainable wealth.

Brookfield's origin as owner/operators of high-quality businesses allows it to leverage its unique operational expertise to grow the businesses it owns on behalf of its clients. It puts its own capital to work alongside its partners' in nearly every transaction, ensuring strong alignment of interests.

Current Workbook \$14bn | 69 Projects

Revenue



*Revenue as at Dec 2025. Workbook is global and the total value of work under secured contracts as at [Q1 2026] including assumed Contract value on Construction Management projects. All values are in USD.

Our People

Built to outperform

Our unique culture positions us to achieve our purpose, to construct a better future. It is built on a shared belief that we can outperform in everything we do, and a set of values that are ingrained in our people: We keep it real; We care about people; We are collaborative; and We have grit.

What does this mean in practice?

Our people are encouraged to be creative in their approach to work, to voice their ideas and opinions, and always ask if we can do more or better.

We are collaborative in the way we listen, share and work as a team – be it with our colleagues, clients, communities or industry. And we know the way to harness opportunities and fulfil potential is by building a strong foundation of trust in our relationships, and by being straightforward and dependable.

We truly care about each other and the world around us, and we have the staying power to make a real difference.



A close-up, profile shot of a man wearing a yellow hard hat and a dark blue work jacket with orange accents. He is smiling broadly, looking upwards and to the right. The background is dark and out of focus, suggesting an industrial or construction setting. The text "Our Expertise" is overlaid in white on the left side of the image.

Our Expertise

Our Expertise

Proven ability to deliver across all property sectors

With a track record of over half a century of successful project delivery, Multiplex combines the power and influence of a global contractor with the hands-on involvement of our senior leaders and experts. This puts us in a unique position in the global construction market.

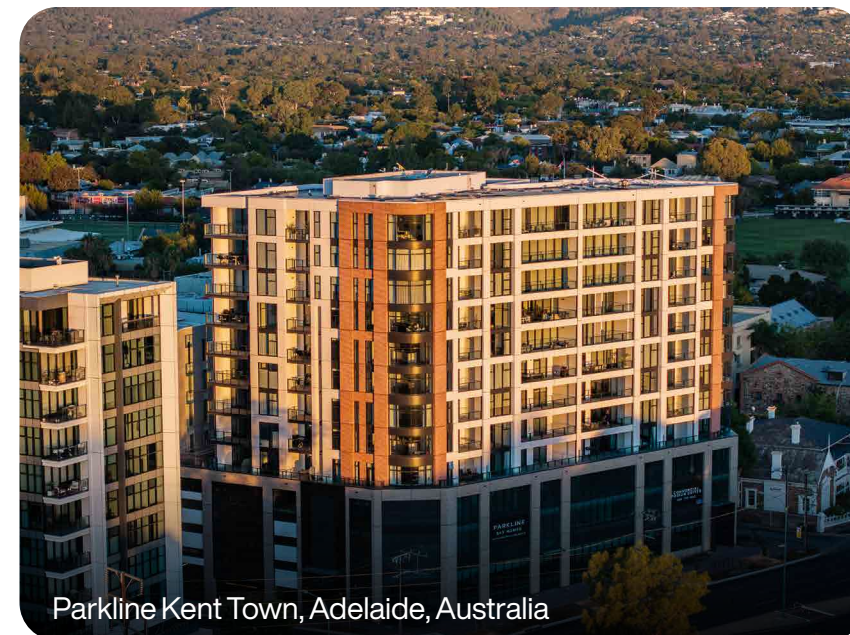
Residential

321

\$34.7bn

Completed Projects

Value



Parkline Kent Town, Adelaide, Australia

Office

298

\$35.6bn

Completed Projects

Value



One Leadenhall, London, United Kingdom

Retail

159

\$10.8bn

Completed Projects

Value



Chatswood Chase, Sydney, Australia

Tourism & Leisure

157

\$24.6bn

Completed Projects

Value



Western Sydney Airport, Sydney, Australia

Industrial & Infrastructure

94

\$7.8bn

Completed Projects

Value



City Busport Alliance, Perth, Australia

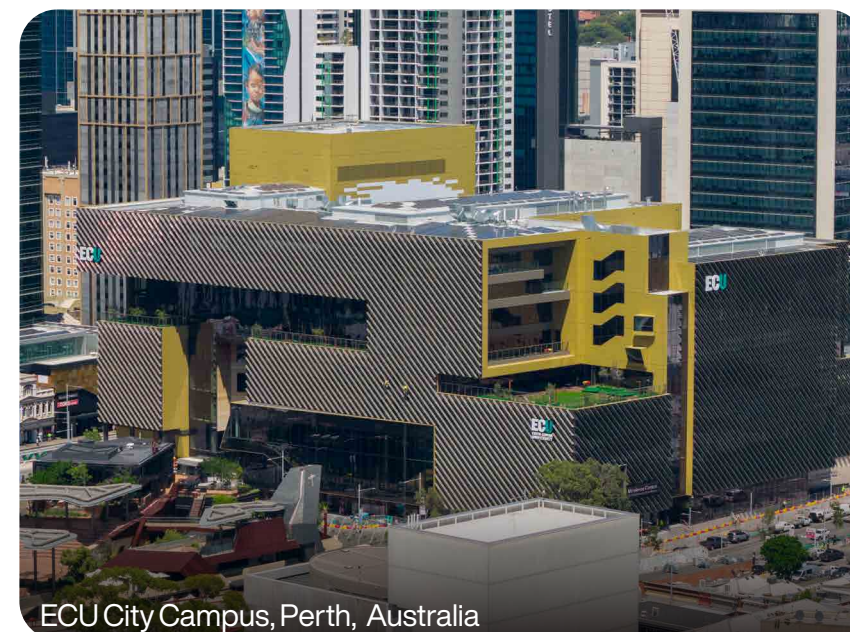
Education & Research

50

\$4.2bn

Completed Projects

Value



ECU City Campus, Perth, Australia

Justice, Civic & Community

40

\$5.1bn

Completed Projects

Value



Etobicoke Civic Centre, Toronto, Canada

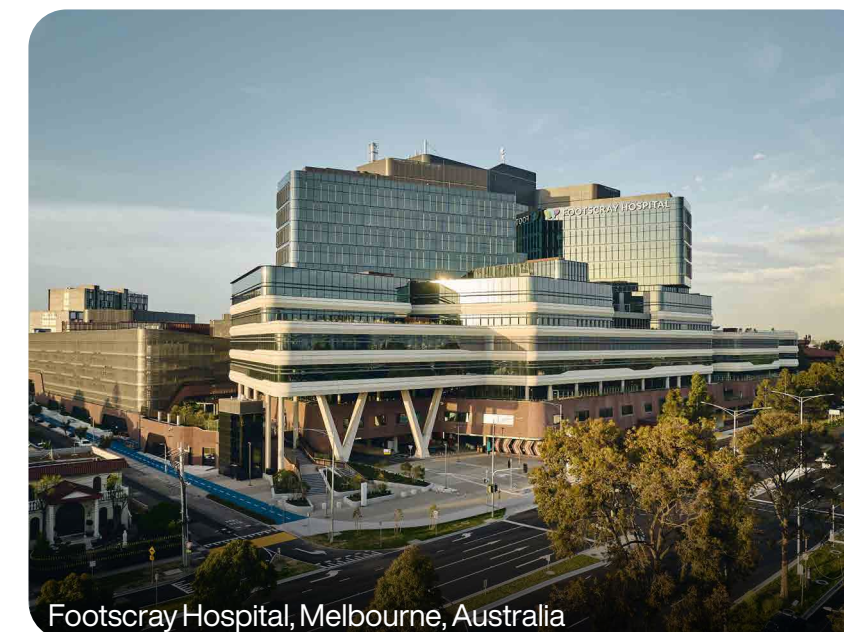
Health & Aged Care & Pharmaceutical

89

\$14.2bn

Completed Projects

Value



Footscray Hospital, Melbourne, Australia

Defence

5

\$0.1bn

Completed Projects

Value



Image supplied by Department of Defence

Data Centres

18

\$1.8bn

Completed Projects

Value



NEXTDC B2, Brisbane, Australia

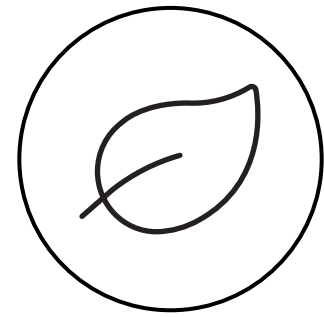
Environment, Social, Governance (ESG)

Strategic pursuit of meaningful change

The fundamentals of ESG have been embedded in our global business for many years. We have led conversations and actions that have evolved our business and industry.

We are driven by vision, action and consistency of delivery across the full spectrum of ESG and have a clear and ambitious way forward.

We focus our efforts on five core principles. Within our core principles, we pursue actions where our opportunity for positive impact is the greatest and the impact of our efforts the most material.



Environment

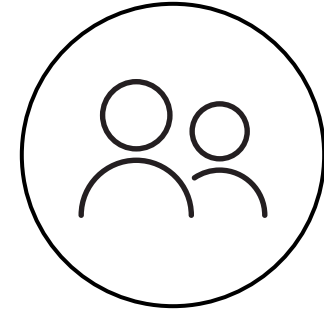
Caring for the environment
Playing our part in the global carbon challenge



People

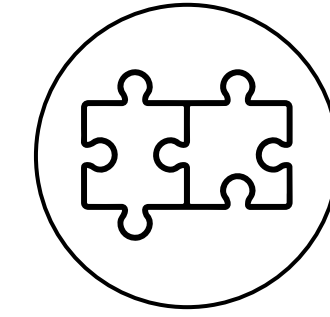
Caring for our people and those around us by:

- Keeping them safe
- Attracting, developing, retaining and rewarding exceptional people



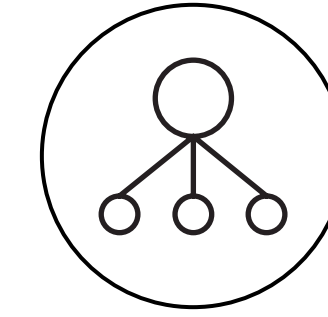
Communities

Connecting and enriching our communities



Partnerships

Building rewarding partnerships with our clients and supply chain



Governance & Operational Excellence

Having sound business practices to manage risks and realise opportunities

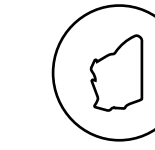
E

S

G

We Create Skylines

Perth



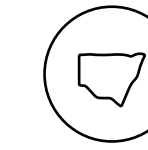
323 Projects across Western Australia



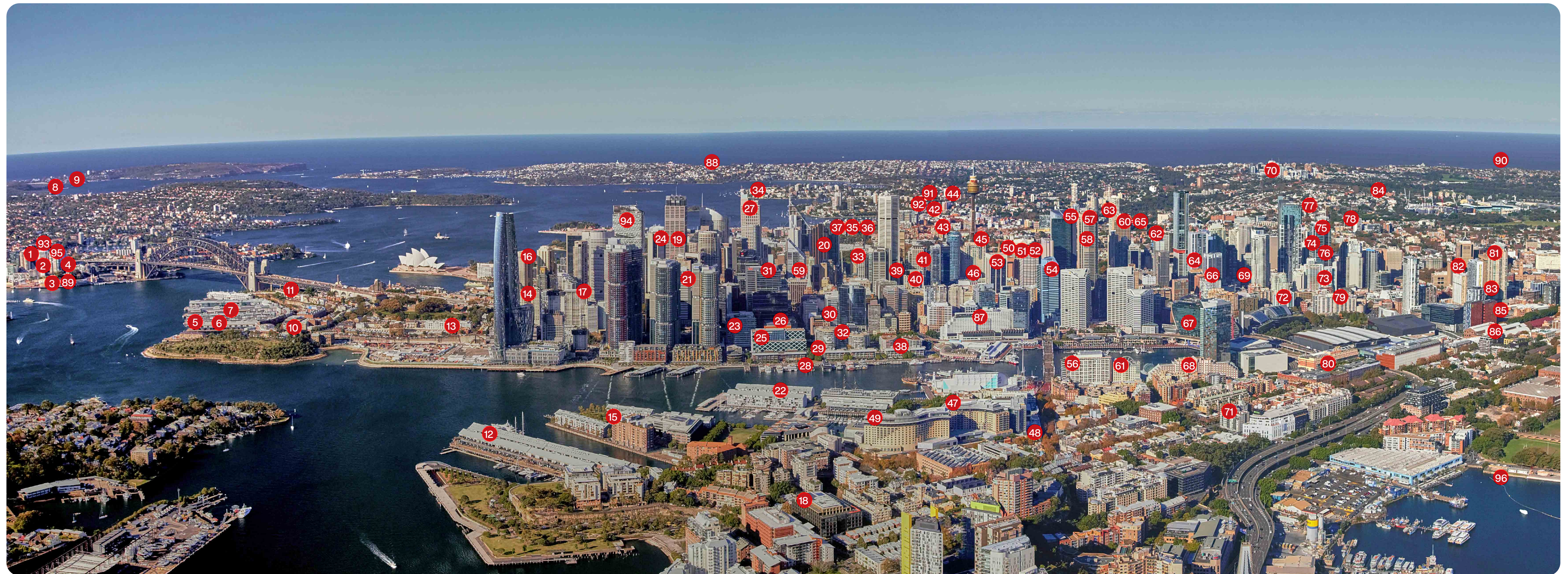
- | | | | | | |
|--|-----------------------------|--|---|--|---|
| 1. Optus Stadium & Rooftop Walk | 22. Airways House | 43. WA Museum Boola Bardip | 64. Central Park | 84. Bishops House | 104. St John of God Murdoch Hospital Redevelopment |
| 2. Crown Towers Hotel | 23. Casablanca | 44. Alexander Library | 65. 160 St Georges Terrace | 85. Alexander Forrest House | 105. Mandurah Forum Shopping Centre |
| 3. Burswood Resort & Convention Centre | 24. Allied House | 45. Perth City Council Carpark | 66. 140 St Georges Terrace | 86. Bishop See North | 106. Waikiki Village, Rockingham and Halls Head Shopping Centre |
| 4. Burswood Casino | 25. Westos House | 46. Perth Institute of Film and Television | 67. 180 St Georges Terrace | 87. RAC Headquarters and Harbour Town | 107. Garden City Shopping Centre and Busport |
| 5. Burswood Resort Hotel | 26. Sheraton Hotel | 47. Forrest Chase/Myer | 68. Australia Place | 88. Capital Square Tower 1 | 108. Old Swan Brewery |
| 6. Claisebrook Inlet Remediation | 27. Langley Plaza | 48. Perth City Busport | 69. Brookfield Place Tower 1 | 89. Windsor Towers | 109. One Subiaco |
| 7. NEXT DC P2 | 28. Police Credit Society | 49. Perth Building Society | 70. Brookfield Place Tower 2 | 90. Penrhos College | 110. Colin Street Fitout |
| 8. WACA Lile Marrah and Prindiville Stands | 29. Chateau Commodore | 50. John Curtin Centre | 71. Dayton Plaza | 91. South Shore Development | 111. Esplanade Hotel and Steamship Building |
| 9. WACA Lights | 30. Pier Street Carpark | 51. CSIRO National Building | 72. Westralia Square | 92. Mounts Bay Village | 112. Fremantle Justice Precinct |
| 10. Stanford Apartments | 31. CSA Centre | 52. Exchange House | 73. 190 St Georges Terrace | 93. Parliament Place | |
| 11. Woodside Offices | 32. Eastpoint Plaza | 53. Allendale Square | 74. His Majesty's Theatre | 94. Mill Point Apartments | |
| 12. Plain Street Offices | 33. St George's Court | 54. Bankwest Tower | 75. Jardine House | 95. Huntington Gate | |
| 13. Local Government House | 34. Lomard House | 55. Colonial Mutual | 76. Orchard Hotel | 96. 14-16 Parliament Place | |
| 14. Withernsea House | 35. Victoria Centre | 56. Enex100 | 77. Cloisters | 97. Riverside Lodge | |
| 15. Hyatt Regency | 36. Wapet House | 57. Exchange Plaza | 78. Mount Newman House | 98. Raffles Apartments | |
| 16. IBM Building | 37. Irwin Chambers | 58. Wesley Centre | 79. London House | 99. Cockburn Arc | |
| 17. Panorama Apartments | 38. Transit Inn | 59. Palace Hotel | 80. Forrest Centre | 100. Fiona Stanley Hospital | |
| 18. Stanford Securities | 39. Cine Centre | 60. Capitol House | 81. St George's House | 101. New Academic Building | |
| 19. 197 Adelaide Terrace | 40. District Court Building | 61. 30 The Esplanade | 82. St George's Square | 102. Harry Perkins Institute of Medical Research and ANPC Fitout | |
| 20. 77 Parkside House | 41. Park Towers | 62. Griffin Centre | 83. Perth Convention & Exhibition Centre, Medina Apartments and EY Building | 103. Murdoch Health and Knowledge Precinct | |
| 21. Ambassadors Hotel | 42. Myer Megamart | 63. 1 The Esplanade | | | |

We Create Skylines

Sydney



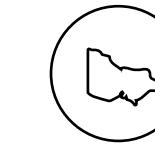
253 Projects across New South Wales



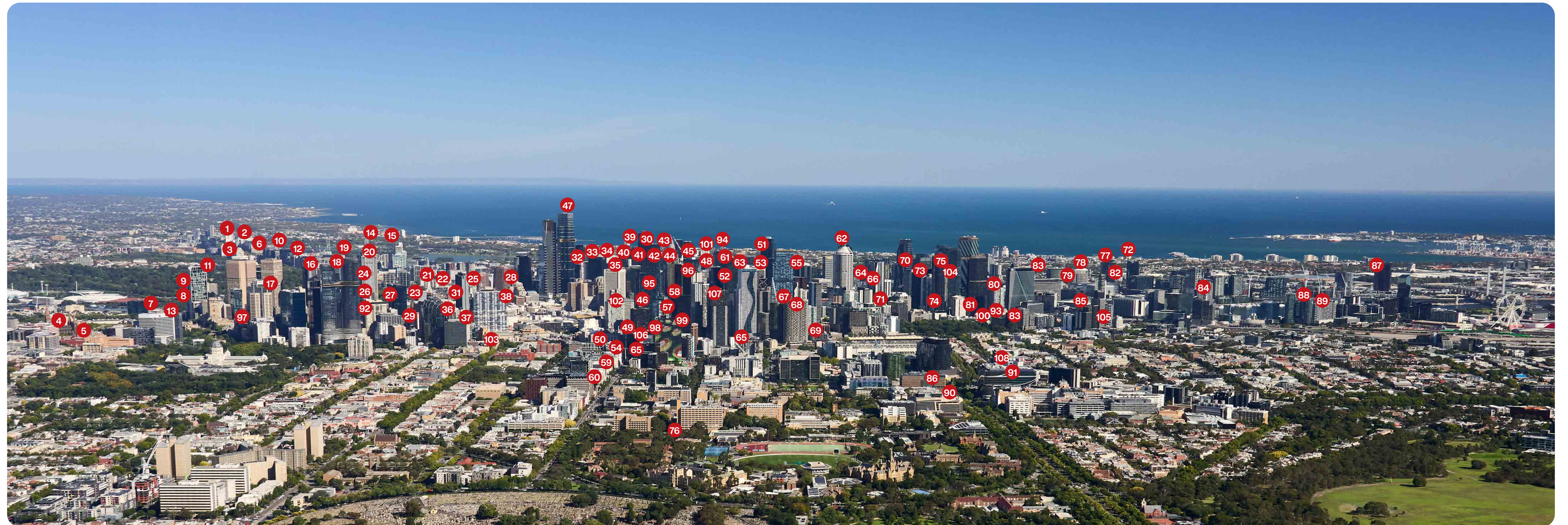
- | | | | | | |
|---|--|--|-------------------------|--|---------------------------------------|
| 1. Beaumonde | 18. Watermark Apartments | 36. Landmark | 54. KMS Tower | 72. Gordon Elizabeth Tower | 90. Maroubra Bay Hotel (out of frame) |
| 2. Colonnades | 19. Intercontinental | 37. Wharf Terraces, Woolloomooloo | 55. Rex Hotel | 73. Latitude Retail | 91. Rushcutters Bay Hotel |
| 3. Luna Park | 20. Reserve Bank of Australia | 38. Medina Serviced Apartments | 56. One Darling Harbour | 74. Latitude Strata Offices | 92. Marina 1 Apartments |
| 4. The Pinnacle | 21. Establishment | 39. 175 Pitt Street | 57. Citigroup | 75. Ernst & Young Tower | 93. Optus Tower |
| 5. Walsh Bay Infrastructure & Redevelopment works | 22. Sydney Wharf | 40. Grace Hotel | 58. Galeries Victoria | 76. ATO Building | 94. Quay Quarter Tower |
| 6. Pier 8 & 9 | 23. KPMG | 41. Skygarden | 59. Aston Apartments | 77. Victoria Barracks | 95. 1 Denison Street |
| 7. Pier 6 & 7 | 24. 2 Bulletin Place | 42. Manhattan Eastpoint Apartments | 60. Whites, Paddington | 78. Sister Anne Court | 96. New Sydney Fish Markets |
| 8. Bear Cottage | 25. One Shelley Street | 43. Vibe Hotel | 61. Ibis Hotel | 79. Trades Hall | |
| 9. Manly Peninsula | 26. American Express | 44. Chancellor | 62. John Maddison Tower | 80. Goldsborough Mort | |
| 10. 1 Kent Street | 27. Chifley Tower | 45. Merchant Court | 63. 3 Kings Lane | 81. Excelsior Apartments | |
| 11. Park Hyatt | 28. King Street Wharf | 46. Sydney Central Plaza (Myer) | 64. Lumiere Residences | 82. Furama Hotel | |
| 12. Jones Bay Wharf | 29. Harbourfront Retail & Wharves | 47. The Star | 65. Monument | 83. Market City (Stage 1 Podium) | |
| 13. Observatory Hotel | 30. NZI Building | 48. The Darling Hotel at the Star | 66. Frasers Suites | 84. Centennial Parklands | |
| 14. The Georgia Apartments | 31. Clarence Street Apartments | 49. Multi Use Entertainment Facility at The Star | 67. Imax Theatre | 85. Mercure Hotel | |
| 15. Darling Island Residential | 32. Wharves 9/10 Apartments, King Street Wharf | 50. Tattersall's Building | 68. Novotel Hotel | 86. Sydney Water Building (out of frame) | |
| 16. Bennelong Centre | 33. 50 Martin Place | 51. Sheraton on the Park | 69. Village Hoyts | 87. 161 Sussex Street | |
| 17. Stamford Plaza | 34. Ardenbraught | 52. Piccadilly Plaza/ Piccadilly Tower | 70. Eastgate | 88. Mark Moran Vaucluse | |
| | 35. The Finger Wharf at Woolloomooloo | 53. City Centre | 71. Bauhaus | 89. Milsons Landing | |

We Create Skylines

Melbourne



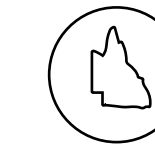
171 Projects across Victoria



- | | | | | | |
|---|----------------------------------|---|---|--|---|
| 1. Boulevard Apartments | 23. Citadines on Bourke | 45. Bella Apartments | 67. City Tempo Apartments | 89. Harbour One | Out of Frame |
| 2. Aurora Apartments | 24. Paramount Apartments | 46. 394 Collins Street | 68. The Lexington - 414 Latrobe Street | 90. Melbourne Brain Centre | 109. Monash Learning and Teaching Building |
| 3. Alfred Medical Research Centre | 25. 171 Collins Street | 47. Australia 108 | 69. EQ Tower | 91. Royal Melbourne Hospital - Stage 1B | 110. Monash University Peninsula Campus Student Accommodation |
| 4. St Vincent's Hospital Stage A | 26. Rockmans Regency | 48. 570 Bourke Street | 70. Hilton Hotel South Wharf | 92. 308 Exhibition St | 111. 111 Monash Bioscience |
| 5. St Vincent's Link | 27. Saville Grand | 49. RMIT Swanston Academic Building | 71. City Point Apartments | 93. Westside Place | 112. Monash University Jazz Club |
| 6. Lucient Apartments | 28. Clements House | 50. RMIT Micro Nano Research Facility | 72. Marine Apartments | 94. Southbank Place | 113. Monash Alexander Theatre |
| 7. 1 Treasury Place & 1 MacArthur St | 29. 321 Exhibition Street | 51. Clarendon Towers | 73. Collins Square Tower 2 | 95. 447 Collins Street | 114. M-City |
| 8. Philadelphia Building | 30. Melbourne Square | 52. 276 Flinders Street | 74. Upper West Side - Stages 1,2,3,4 | 96. 472 Bourke Street | 115. Bunjil Place |
| 9. 51 Spring Street | 31. Midtown Plaza | 53. CBW - Corner Bourke and William Streets | 75. Premier Tower | 97. 80 Collins Street | 116. Epworth Geelong Hospital |
| 10. Eden on the Park | 32. Summit Apartments | 54. RMIT Capital Works | 76. Faculty of Architecture Building & Planning | 98. 501 Swanston Street | 117. Werribee Mercy Hospital |
| 11. 35 Spring Street | 33. Melbourne City Towers | 55. 99 King Street | 77. Collins Square Tower 5 | 99. Swanston Central | 118. Flemington VRC New Stand |
| 12. Domain Apartments | 34. Victoria Apartments | 56. 460 Lonsdale Street | 78. Collins Square Tower 4 | 100. Westside Place - Stage 2 | 119. La Trobe University Student Accommodation |
| 13. 8 Nicholson Street | 35. Southbank One | 57. County Court | 79. Collins Square Tower 3 | 101. Focus Apartments | 120. Capitol Grand |
| 14. Royal Domain Apartments | 36. 33 Mackenzie | 58. Republic Tower | 80. Southern Cross Station - Platforms 15 & 16 | 102. 405 Bourke Street | 121. Centre for National Resilience - Mickleham |
| 15. St James Apartments - 350 St Kilda Rd | 37. Concept Blue | 59. Uropa Apartments | 81. 700 Bourke Street | 103. Trades Hall | 122. Footscray Hospital |
| 16. Southern Cross East Tower | 38. Novotel Australia on Collins | 60. Seasons Apartments | 82. 720 Bourke Street | 104. Monash College - 750 Collins Street | 123. Project Reliance Moderna |
| 17. Urban Workshop 50 Lonsdale Street | 39. Freshwater Place Residential | 61. Lighthouse | 83. Melbourne One | 105. West Side Place | 124. Amazon |
| 18. Sovereign Apartments | 40. Southbank Grand | 62. Melbourne Convention & Exhibition Centre | 84. Victoria Point Docklands | 106. 100 Franklin St | |
| 19. Kingspark on Southbank | 41. Prima Tower | 63. Paragon | 85. Australis | 107. 435 Bourke St | |
| 20. 209 Kingsway | 42. Southbank Tower | 64. 350 Queen Street | 86. Peter Doherty Institute | 108. Grattan Street Accomodation | |
| 21. Southern Cross II West Tower | 43. Mainpoint Apartments | 65. Australian Nursing and Midwifery Federation | 87. Portside Business Park | | |
| 22. Federation Square | 44. Platinum | 66. Flinders Wharf | 88. The Quays | | |

We Create Skylines

Brisbane



104 Projects across Queensland



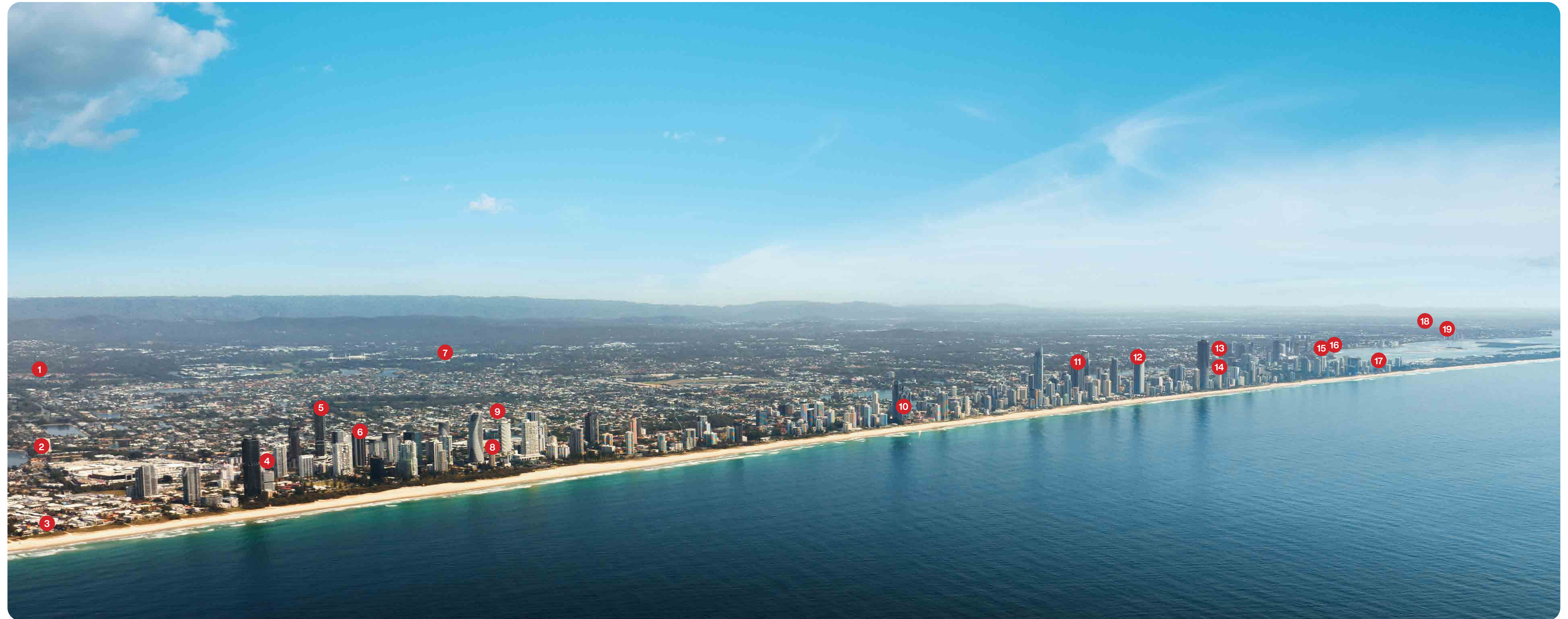
- | | | | |
|--|--|--|--|
| 1. Mater Private Clinic & Link Bridge (out of frame) | 10. Queen's Wharf Integrated Resort and Residences & Queen's Wharf Foreshore | 19. Riparian Plaza | 29. Novotel Hotel |
| 2. Proximity Offices | 11. 1 William Street | 20. Frisco Apartments | 30. Judith Wright Centre of Contemporary Arts |
| 3. South Bank Underground Carpark | 12. Tribeca Apartments | 21. Republic Apartments | 31. Willhara Apartments |
| 4. Queensland Conservatorium of Music | 13. Festival Towers | 22. 570 Queen Street | 32. Newstead Towers |
| 5. Imax Cinema Complex | 14. Wintergarden Redevelopment | 23. Royal Brisbane Hospital - East Block | 33. Ellington Teneriffe |
| 6. Brisbane Casino Towers | 15. Unilodge | 24. Royal Brisbane Hospital - Carpark | 34. Portside Wharf Stage 1 & 2 (out of frame) |
| 7. Suncorp Stadium | 16. River City | 25. FV-Gurner | 35. Portside East Gallery House (out of frame) |
| 8. Indooroopilly Shopping Centre (out of frame) | 17. 40 Elizabeth Street | 26. River City | 36. UNE University Mansions (Shafton) |
| 9. 300 George (W Hotel, The One, 300 George Street) | 18. 240 Margaret Street | 27. Cathedral Place | |
| | | 28. 743 Ann Street | |

We Create Skylines

Gold Coast



104 Projects across Queensland



- | | | | |
|------------------------------------|--|--|---|
| 1. Lakelands Resort, Merrimac | 6. The Beach Apartments | 11. Hilton Surfers paradise Hotel and Residences | 16. Pivotal Point Towers, Southport |
| 2. Twin Towers Resort, Tweed heads | 7. Royal Pines Residences | 12. Crown Towers, Surfers Paradise | 17. Directors' Suites, Main Beach |
| 3. Cotton Beach Resort | 8. Gold Coast Convention and Exhibition Centre | 13. Harvey Norman, Bundall | 18. Movieworld Theme Park, Helensvale |
| 4. Neptune Apartments, Broadbeach | 9. The Wave, Broad Beach | 14. Rhapsody, Surfers Paradise | 19. Harbourtown Shopping Centre & Tavern "Dublin Docks", Biggera Waters |
| 5. Destination Gold Coast Towers 2 | 10. Jewel, Gold Coast | 15. Rivage Royal, Southport | |

We Create Skylines

Adelaide



18 Projects across South Australia



- 1. ATO Building
- 2. IMAX Theatre
- 3. Maxwell on the Park
- 4. Bow House
- 5. Elder House Fitout
- 6. ATOSA Consolidated
- 7. Medina Grand
- 8. Embassy Apartments

- 9. Horizon Apartments
- 10. Qantas Lounge Fitout
- 11. Centro Colonnades
- 12. Newport Quays Stage 1 (out of frame)
- 13. Newport Quays Stage 2 (out of frame)
- 14. The Precinct - Altitude
- 15. Burnside Village Shopping Centre (out of frame)
- 16. Pasadena Shopping Centre

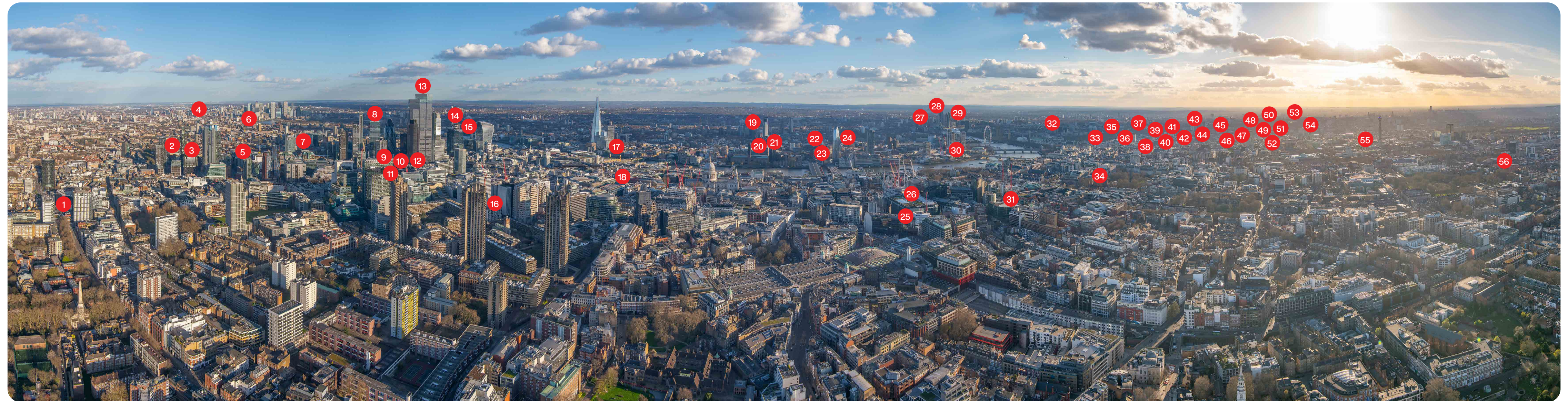
- 17. The Rowlands Apartments
- 18. 83 Pirie Street
- 19. Parkline (out of frame)
- 20. Journal Student Living (275 Nth Tce)
- 21. Market Square / CMAP
- 22. Keswick Barracks

We Create Skylines

London



79 Projects across the United Kingdom



- | | | | | |
|----------------------------------|--------------------------------------|-------------------------------------|---|---|
| 1. White Collar Factory | 15. 50 Fenchurch Street | 29. The Tower – One St George Wharf | 43. Stamford Bridge – Chelsea FC | PROJECTS OUT OF FRAME |
| 2. Principal Tower – Residential | 16. London Wall Place | 30. 76 Southbank | 44. The Wellesley Knightsbridge | 57. St John's Wood Square |
| 3. Principal Place – Commercial | 17. The Delft | 31. 98 Fetter Lane | 45. Knightsbridge Apartments | 58. White City TVC2 Phase 2 |
| 4. Royal Albert Dock | 18. 125 Wood Street | 32. The Broadway | 46. Burlington Gate | 59. Thames Edge Court |
| 5. One Exchange Square | 19. Strata SE1 | 33. Verde SW1 | 47. Centre Point | 60. Wembley National Stadium |
| 6. West India Quays | 20. Elephant & Castle Town Centre | 34. Lincoln Square | 48. 20 Grosvenor Square | 61. Langley Park Hotel |
| 7. Aldgate Tower | 21. UAL Fit-Out | 35. Chelsea Barracks – Phase 4 | 49. 30 Grosvenor Square | 62. Bridges Hall – University of Reading |
| 8. 100 Bishopsgate | 22. Western Yards Building 2 - Opus | 36. New Zealand House | 50. 65 Davies Street | 63. University of Kent |
| 9. 15 St Helen's Place | 23. Western Yards Building 3 - Arbor | 37. The Glebe | 51. 73 Brook Street | 64. University of Glasgow |
| 10. 5 – 7 St Helen's Place | 24. One Blackfriars | 38. LSQ London | 52. 73 – 89 Oxford Street | 65. One Argyle Street, Glasgow |
| 11. 75 London Wall | 25. Holborn Viaduct | 39. Auriens Chelsea | 53. Holland Park Villas | 66. Peterborough City Hospital |
| 12. 15 Bishopsgate | 26. LONDON Development Project | 40. Eaton Place | 54. Marble Arch Place | 67. Eden Shopping Centre, Wycombe |
| 13. 22 Bishopsgate | 27. DAMAC Tower | 41. 21 Manresa Road | 55. 80 Charlotte Street | 68. The Queen Elizabeth Hospital and Royal Hospital for Children, Glasgow |
| 14. One Leadenhall | 28. One Nine Elms | 42. Lateral Luxury Apartments | 56. The Garden Halls – University of London | 69. Royal Hospital for Sick Children and Department for Clinical Neurosciences, Edinburgh |
| | | | | 70. City Park 1, Aberdeen |
| | | | | 71. Regent Quarter, Jahn Court |

We Create Skylines

Toronto



45 Projects across Canada



1. Multiplex Head Office Fit-out and Global Furniture Group Fit-out
2. CampusOne Student Residence
3. The Quay
4. Transit City, Towers 1, 2 and 3
5. AON Headquarters Office Fit-out
6. New Residences of Yorkville Plaza

7. St. Regis (formerly Trump Hotel)
8. Bay Adelaide Centre North Tower
9. National Research Council of Canada Fit-out
10. Bay Adelaide Centre East Tower and Podium
11. Deloitte Headquarters Fit-out
12. Immigration Board of Canada Fit-out
13. Core Condominiums

14. Parkside Student Residence
15. Grid Condominiums
16. One Delisle
17. St. John's McNicoll Centre
18. Station No.3 Condos
19. Lansing Square – Block 1

PROJECTS OUT OF FRAME:

20. Carefirst One-Stop Multi-Service Centre
21. OmniaBio B
22. Hotel X
23. Kings Club
24. 158 Sterling - Museum of Contemporary Art Junction House

26. Etobicoke Civic Centre
26. Enwave District Energy Plant
27. Distrikt Trailside Condos
28. University of Toronto Mississauga New Student Residences

29. Kitchener Indoor Recreation Complex at RBJ Schlegel Park

Built to outperform.