

ONE DELISLE

SLATE



PROJECT OVERVIEW

- Installing hoarding and fencing to demarcate the construction area and protect pedestrian safety, including providing a covered pedestrian walkway on Delisle Avenue and Yonge Street
- Removing the existing façade from 1496 –1498 Yonge Street
- Establishing a construction site office and construction vehicle access gate at 1 Delisle Avenue
- Closing the ramp from Delisle Ave to the underground parking garage of 2 St. Clair Avenue West. Access from St. Clair Avenue West will be maintained throughout construction
- Temporarily removing landscaping from the Delisle – St. Clair Parkette and converting it into a gravel parking lot to accommodate construction deliveries, minimizing the impact of construction traffic on Delisle Avenue
- Building a gravel pad to provide a stable, level surface for the shoring machine
- Carrying out underground utilities and services works. There will not be any disruption to services
- Excavation, piling and caisson works to prepare for construction of the tower
- Erecting a tower crane
- Building a new 44-storey tower, which includes 371 suites, three penthouse floors and two-storeys of retail fronting on Yonge Street
- Temporarily removing pedestrian access to the sidewalk on the south side of Delisle Avenue, between 15 Delisle Avenue and Yonge Street, for public safety. The sidewalk closure is expected to be in place from summer 2024 until June 2026. Further information will be provided in future project updates.
- Delivering a revitalized and expanded Delisle Parkette to the community.



PLEASE NOTE

There will be noise, dust and vibration associated with the construction of this project. Multiplex has a comprehensive control plan in place to mitigate the impact of construction on the community and will ensure all work is within acceptable levels and meets the requirements of all applicable by-laws.

One Delisle

Project Update

October 2023

Multiplex Construction Canada is delivering this project for Slate Asset Management, bringing 371 new residences to the Yonge and St. Clair community.

ABOUT THE PROJECT

Construction Manager:
Multiplex

Architect:
Studio Gang

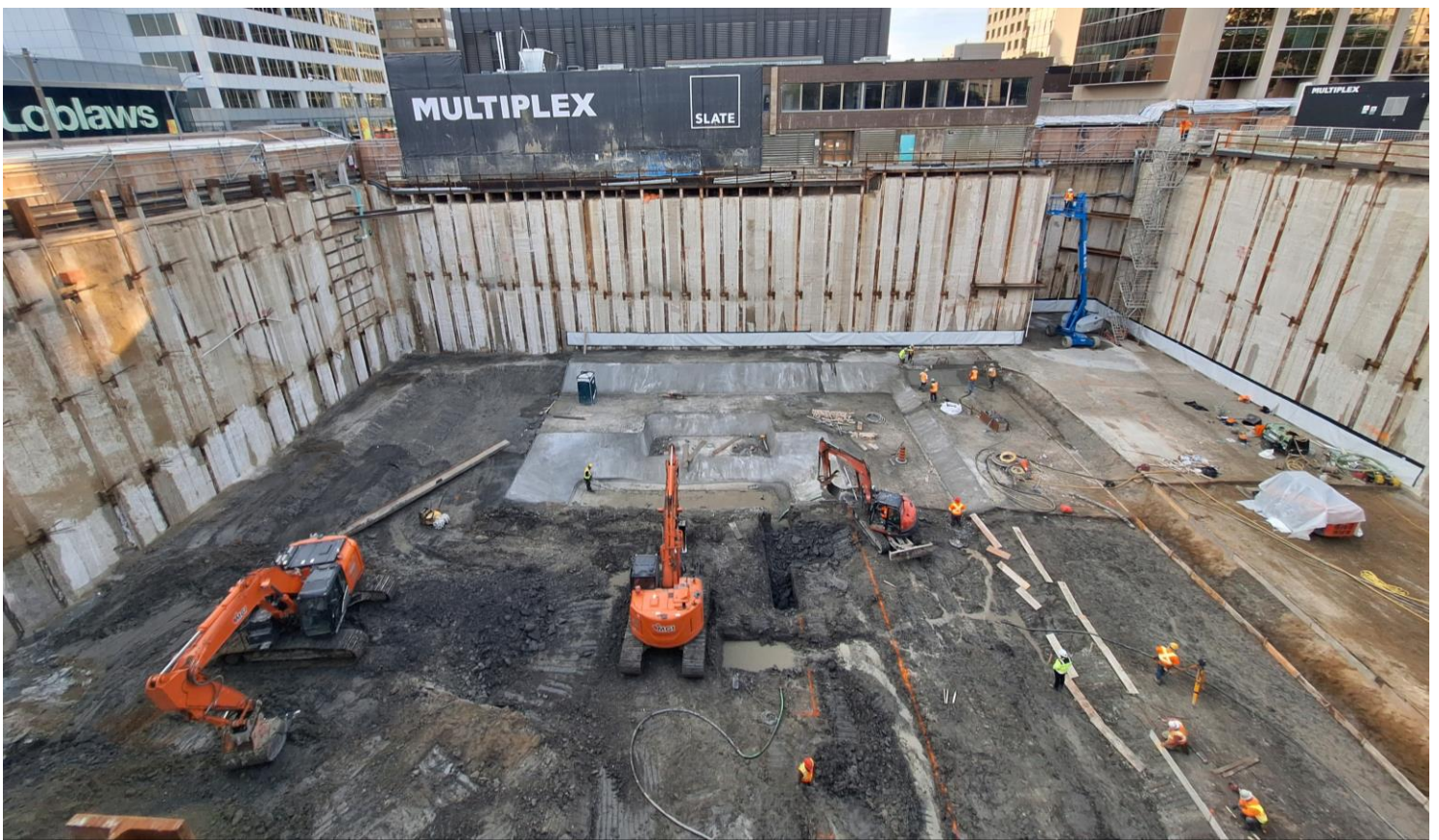
Architect of Record:
WZMH Architects

Owner:
Slate Asset Management

One Delisle is a 44-storey, 370,000 square foot mixed-use tower that will complement the Yonge Street and Delisle Avenue corner at street level while transforming the Toronto skyline above. Construction is starting in early 2022 and will be complete in 2026.

MULTIPLY

Built to outperform.



Pictured: One Delisle progress update as of October 2023

UPCOMING ACTIVITIES

Our upcoming construction activities are:

October - December 2023

- Removal of excavation equipment from the site base.
- Crane erection.
- Raft slab steel installation.



WORKING HOURS

Our standard working hours are **Monday to Friday** from **7am to 7pm** and **Saturdays** from **9am to 7pm**, in accordance with the Toronto Municipal Code Chapter 591 – Noise. If we need to carry work outside of standard construction hours, we will notify you in advance.

CONTACT US

If you have an enquiry or feedback, we would like to hear from you. Please contact the Multiplex Project Team at:

Email: communityca@multiplex.global

Phone: **+1 437 998 6270**



One Delisle Virtual Town Hall

On September 28th the Multiplex team held a virtual town hall for the One Delisle community.

During the session Multiplex shared the upcoming construction activities at One Delisle in the next year and the planned sidewalk and lane closure.

Thank you to all the community members for participating in the session and sharing your comments and questions. We appreciate your time and feedback and will continue to work with the community to address all issues.

If you have any follow up comments or questions please do not hesitate to reach out to us by email or phone.