



# **MULTIPLY**

Built to outperform.

**Education**



# A trusted partner

Multiplex is a trusted partner in the delivery of leading education projects – from vibrant campuses to complex laboratories and thoughtful student accommodation. Over many years we have shown that we understand how universities work and can translate teaching and learning aspirations into practical building solutions. Most importantly we have shown that we deliver on our commitments.

More than half of our education projects are for repeat customers. As genuine delivery partners, many clients seek our input during and even before the early planning of a project. We have shown that we add real value by proposing alternative design and delivery solutions that save money and improve the end user experience.

*“UNSW has partnered with Multiplex on several occasions over the past six years and has come to value them for their input both in the planning and execution of our projects. BM understands our requirements and delivers on the commitments it makes.”*

**Peter McGeorge, Associate Director, Facilities Management (Planning and Development) at University of New South Wales**

# We build to boost learning

We understand that academic performance is paramount for educational institutions wanting to attract and retain students and teachers. And we know how to translate the latest in educational thinking into building outcomes that optimise learning.

At RMIT’s Swanston Academic Building in Melbourne, Multiplex collaborated with the architect and client to build unique student portals to maximise engagement and collaboration. Understanding our client’s requirements, we also integrated a building management system to facilitate students’ flexible working patterns.

Multiplex also appreciates the importance of minimising impact on existing students and academics, and are experts at working in live campus environments. We adapt our delivery programs to cater for the normal course of a semester and prioritise the health and safety of students.

*“Throughout the project Multiplex worked in an open and collaborative manner that ensured design integrity was maintained and the vision for the building was realised... The professional approach of Multiplex has been a major contributing factor to a successful and effective delivery.”*

**Professor Margaret Gardner AO, Former Vice-Chancellor and President, RMIT University**

# We have delivered...

231

education projects



8

cities

4

countries

52% for repeat clients

80% in an operating environment



RMIT Swanston Academic Building, Melbourne



# We future proof for ongoing use

We see our role in a project extending beyond delivery to the ongoing operation and usefulness of a building. This is particularly important in an education environment where institutions are expected to adapt to emerging technologies and evolving ways of learning.

Beyond defect management our aim is to future proof education facilities and build-in flexibility to adapt to changing requirements.

We do this in a number of ways both before and during the build, and in the building structure and interior fitout. For example we can purpose-build structures that adapt to varying loads and enable flexible use of space, and services that have the capacity to meet potential expansion and future technology.

Internally we create flexible workspaces with a mix of hot desks for students, common spaces for casual work and congregation, and seated or tiered spaces to encourage collaboration. Modular furniture and operable walls further support a variety of uses.

Material and equipment selection is also important. We use long-life materials for the building bones and leave services exposed where possible. And we look for materials that have dual purposes such as pinnable surfaces with an acoustic function.

# We create a lasting legacy

As contractors we are in a unique position to have a positive impact on our buildings' end users as well as the broader communities in which we operate. We view our projects as opportunities to align with our clients' goals and create long-term change that extends beyond the life of our projects.

At the University of Melbourne's Faculty of Architecture Building and Planning project the team instigated a wide range of initiatives to positively impact on students' learning.

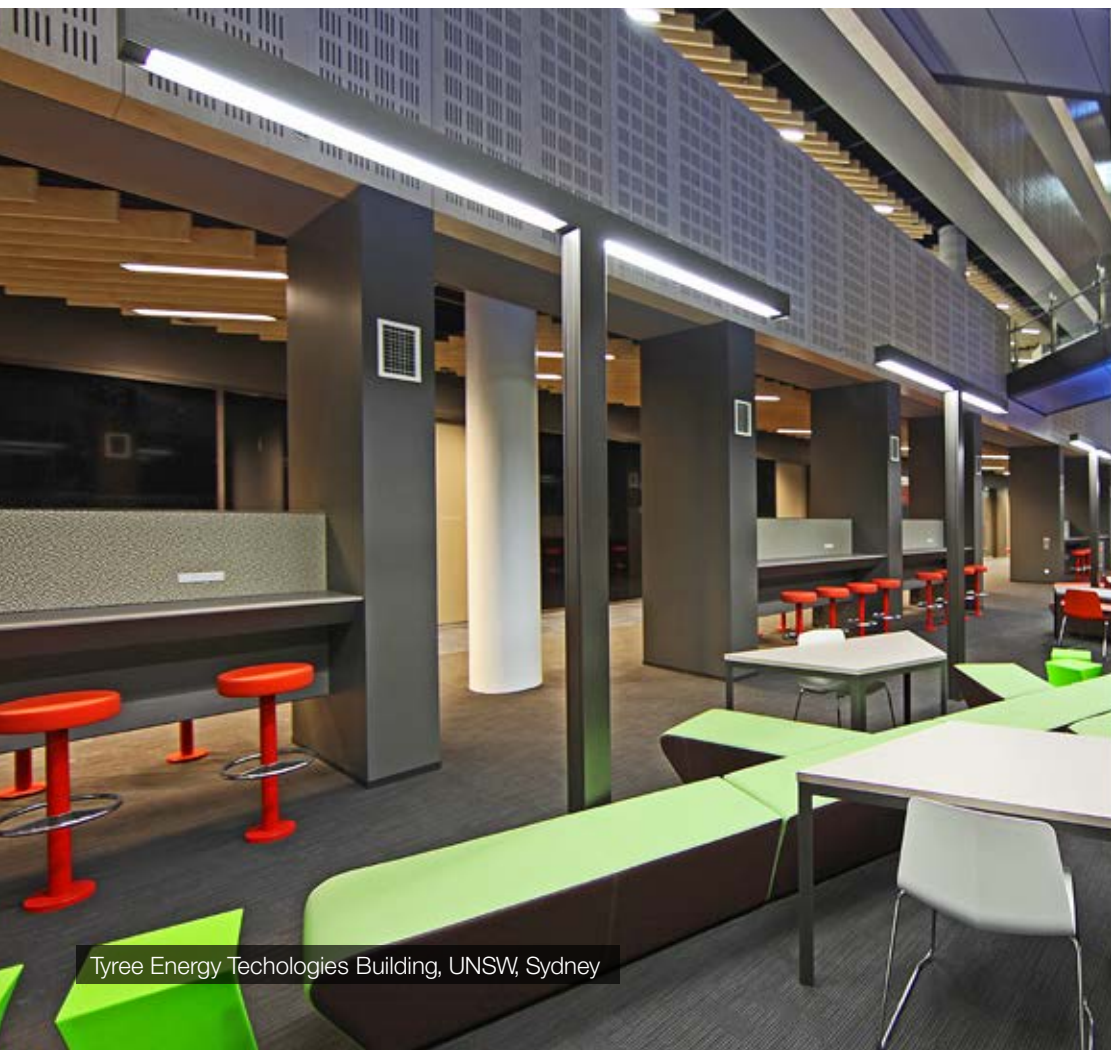
This included an eleven-week lecture series; a classroom overlooking the building site to enable live commentary on works underway; several student tours through off-site manufacturing facilities; and over eighty site walks for some 700 University of Melbourne students, staff and alumni.

Recognising the lasting contribution we made to the Faculty community, the University appointed the Multiplex Project Manager as a Senior Fellow of the University.

Similarly our 'Living Lab' program at UNSW's Tyree Energy Technologies Building used the construction site as a teaching tool for students. Multiplex and UNSW designed a series of lectures and site tours to show building concepts in action, and students used the project as a case study for class assignments.

***"In addition to being a construction project, we had anticipated that it would be a special opportunity to create a significant learning experience and a research tool for students and staff. This has indeed been the case,"***

***Professor Tom Kvan, Dean of the Faculty of Architecture Building and Planning, The University of Melbourne.***



Tyree Energy Technologies Building, UNSW, Sydney



Faculty of Architecture, Building and Planning, University of Melbourne

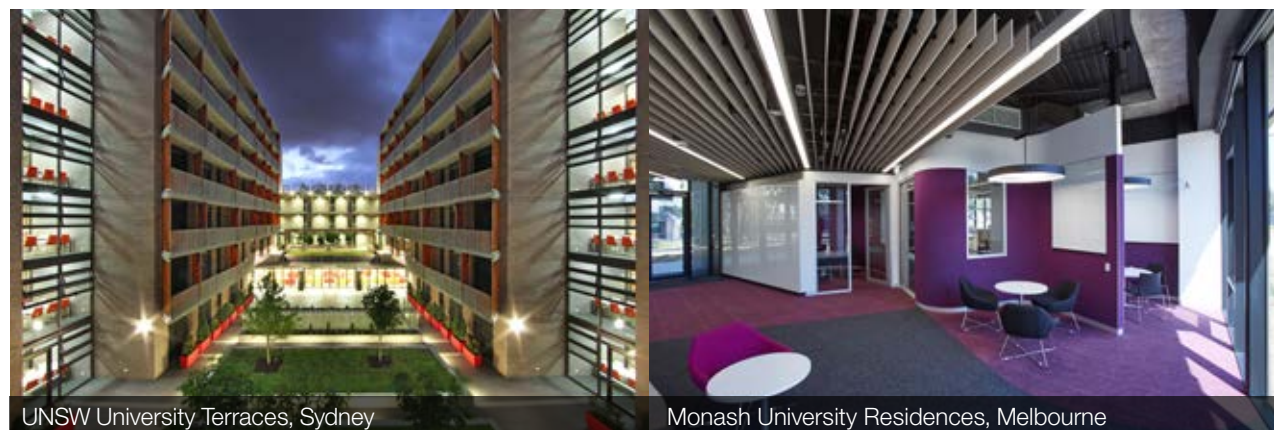


# Accommodation to enhance the student experience

A sub-sector in its own right, student accommodation combines our skills in delivering high quality residential developments with our experience in working in live education environments.

With the growing number of international students in Australia, universities are increasingly required to offer accommodation options as part of the learning experience. And Multiplex has delivered some of the country's best.

The new student accommodation buildings at University of New South Wales (University Terraces) and Monash University's Clayton campus (University Residences) are a wonderful example, highlighting our ability to fast-track design and cut costs while still maintaining design integrity.



UNSW University Terraces, Sydney

Monash University Residences, Melbourne



Monash University Residences, Melbourne



# Project Directory



## Monash University Student Accommodation, VIC

**Scope:** Construction of four residential accommodation buildings providing a combined total of over 1,000 studio apartments, with associated retail and student informal learning spaces.  
**Project Value:** \$145M  
**Client:** Monash University  
**Dates:** 2014 – 2016

*“The collaborative process undertaken between the members of the client, design and construction teams resulted in a streamlined construction process that was able to meet very tight project deadlines.”*

**Graham Burrows, Director, Jackson Clements Burrows Pty Ltd Architects**

The fast-tracked design and delivery of the Monash Accommodation Precinct allowed the project to be completed on time and with a significant cost saving from the initial contract value.

These savings came despite a number of challenges faced in the project delivery, including complex designs for the four residential buildings and working with multiple stakeholders with four architects appointed to ensure each building had a distinct look and identity.

Over 3,500 pre-cast concrete panels were used in the construction and were designed, manufactured and delivered in time for the concrete pour on each level – a significant logistics effort.

Construction was also accelerated by the use of prefabricated bathroom pods – complete bathrooms manufactured off-site – that were later installed into position once structures were complete.

The student accommodation precinct opened as planned at the beginning of the 2016 academic year.



## RMIT Swanston Academic Building, VIC

**Scope:** Design and construction of 11 storey, 34,350m<sup>2</sup> building incorporating offices, a cinema, teaching spaces, lecture theatres, student portals and cafes.  
**Project Value:** \$200M  
**Client:** RMIT University  
**Dates:** 2010 - 2012

Established relationships, early design involvement and smart upfront decisions not only saved RMIT money but also sped up construction, allowing staff and students to occupy their new building a full semester early.

The eye-catching Swanston Academic Building (SAB) is the new home of RMIT’s College of Business catering for 800 staff and approximately 8,000 students. The 11 storey, 34,350m<sup>2</sup> building offers students and academics a unique learning and teaching environment with outstanding amenities and facilities designed to encourage student engagement and collaboration.

Bringing the complex design to life was not without its challenges. The architects specified hundreds of different interior finishes with no two floors the same. Extreme attention to detail was required for the intricate façade which comprises hundreds of lightweight angular sun shades of different colours. In addition, the façade is punctuated at the upper levels by dramatic apertures defining double-height student portals with extremely elaborate ceilings.

To add to the complicated design, SAB was located on an extremely tight urban site adjacent to a heritage listed building and surrounded by a live campus. The site also had one of Melbourne’s busiest tram lines on its doorstep. Despite the highly complex design and site challenges, this high performance building was delivered ahead of schedule, under budget and to the highest quality.



## Charles Perkins Centre, NSW

**Scope:** Design and construction of a 46,700m<sup>2</sup> research and education centre.  
**Project Value:** \$220M  
**Client:** University of Sydney  
**Dates:** 2012 - 2013

The Charles Perkins Centre has boosted the University of Sydney’s capabilities in providing leading research and study into the diagnosis and treatment of obesity, diabetes and cardiovascular disease - Australia’s leading causes of illness and mortality.

Always seeking better value for our clients, during the tender stage the project team identified an innovative alternative design for the facility which offered a significant capital cost saving while still meeting the University’s core needs.

Collaborating with local architectural firms, the Multiplex team explored alternative designs and offered real value for money without compromising on innovation and overall design. As a result, the amended design offered the desired functionality, enhanced by a more efficient floor plan and considerable cost savings.

The completed centre accommodates 950 researchers and 1,455 undergraduates and provides a combination of wet and dry laboratory spaces, new imaging and flow cytometry facilities (including live cell imaging), clinical research facilities and a biobank.

The facility was delivered ahead of schedule and in time for the start of the 2014 academic year.



## UNSW Tyree Energy Technologies Building, NSW

**Scope:** Design and construction of a landmark 6-Star energy efficient building, consisting of 15,000m<sup>2</sup> of floor area located over six levels.  
**Project Value:** \$95M  
**Client:** University of New South Wales  
**Dates:** 2010 - 2012

*“We have been impressed that Multiplex recognises the importance of quality design and, specifically, the importance of inspirational institutional architecture.”*

**Peter McGeorge, Associate Director, FM, (Planning and Development), University of New South Wales**

Multiplex delivery of the UNSW Tyree Energy Technologies Building as a 6-Star Green Star rated building has shown that sustainability and world-class architecture can go hand in hand.

Understanding the client’s goal to create a landmark building for the University reflecting its commitment to sustainability, the project team incorporated energy efficient materials into the architectural design, including using high performance materials to construct the building’s striking façade.

Whilst meeting the extensive Green Star requirements, Multiplex proactively managed a number of challenges during construction, including ongoing consultation with UNSW staff to minimise the impact on day-to-day activities at the busy university campus.

The strong partnership with the client allowed the project team to identify ways to achieve greater value, at times above and beyond construction, including the implementation of a ‘Living Lab’ to provide UNSW students the opportunity to study the building’s construction first-hand.

Despite a late change of scope from the University the building was delivered to program, allowing the Tyree Energy Technologies Building to open in time for the start of the 2013 academic year.





# Built to Outperform.

On time and on budget delivery of our projects is a given. We challenge ourselves to go further – to exceed our clients' expectations and drive genuine value for all stakeholders. We challenge ourselves to outperform.



# MULTIPLEX

For further information please  
contact Multiplex on  
[info@multiplex.global](mailto:info@multiplex.global) or:

## **New South Wales**

L22, 135 King St  
Sydney, NSW 2000  
T: +61 2 9322 2400  
F: +61 2 9322 2001

## **Western Australia**

Level 1, 123 St. George's Tce  
Perth, WA 6000  
T: +61 8 9483 0899  
F: +61 8 9483 0898

## **Queensland**

Level 6, 240 Queen Street  
Brisbane QLD 4000  
T: +61 7 3907 4000  
F: +61 7 3220 1177

## **Victoria**

Level 3, 499 Swanston Street  
Melbourne, VIC 3000  
T: +61 3 9353 3500  
F: +61 3 9347 0031

---

[www.multiplex.global](http://www.multiplex.global)

